



Process: Quality Control
Category: Global
Document type: Instruction
Language: English
IHT: Internal

Title: AQL- Shelter Tool Kit

Document ID: TSLOG-16-86352
Document Status: Approved
Effective date: 12/28/2022
GDP related: No
Version: 2.0

Definitions:

Critical nonconformity : Any discrepancy which might harm a user or makes it impossible to use the product properly is considered to be critical. Lots with Critical discrepancies is subject to lot refusal.

Major nonconformity : Any discrepancy which makes the use of the product less efficient than expected is considered to be major. Lot with Major discrepancies can be accepted.

Minor nonconformity : Any discrepancy which does not have an influence on the performance of the product is considered to be minor. Lot with Minor discrepancies can be accepted.

Nonconformity: Non-fulfilment of a specified characteristic requirement.

Nonconforming item: Item with one or more nonconformities.

Lot: Definite amount of some product, material or service, collected together

Sample: Set of one or more items taken from a lot and intended to provide information on the lot

Non-Conformities and Corrective Action:

Critical: (AQL 0)

Determination of lot acceptability: to be decided by ICRC' Quality and buyers.

Continual improvement: Improvement plan to be proposed by supplier and validated by the ICRC to eliminate the root cause of occurrence and non detection for the faced non-conformity (ies) for the upcoming purchases. Actions to be implemented by supplier within a defined time frame by default 3 months.

Penalty: 10% penalty of the value of the total PO per each critical non-conformity to be charged to the supplier .

Major: (AQL 4.0)

Determination of lot acceptability: to be decided by ICRC' Quality and buyers.

Continual improvement: Improvement plan to be proposed by supplier and validated by the ICRC to eliminate the root cause of occurrence and non detection for the faced non-conformity (ies) for the upcoming purchases. Actions to be implemented by supplier within a defined time frame by default 3 months.

Penalty: 0.5% penalty of the value of the total PO per each major non-conformity to be charged to the supplier.

Minor: (AQL 6.5)

Determination of lot acceptability: to be decided by ICRC' Quality and buyers.

Continual improvement: Improvement plan to be proposed by supplier and validated by the ICRC to eliminate the root cause of occurrence and non detection for the faced non-conformity (ies) for the upcoming purchases. Actions to be implemented by supplier within a defined time frame by default 3 months.

Penalty: 0.25% penalty of the value of the total PO per each minor non-conformity to be charged to the supplier.

Additional Information:

The Method of testing is drawn from ISO-2859-1 International Standards (table1: Sample size code letters, and table 2-A: Single sampling plans for normal inspection). The samples will be taken randomly by the buyer from the delivered items and then inspected.

The buyer can decide either to inspect the lot at ICRC QC laboratory or to use an inspection company for analysis, or both. Transport to laboratory and analysis cost for lab testing are at expense of ICRC.

The seller can contest the results of the Quality Control done at ICRC warehouses by requesting a lab testing. In this case transport to laboratory and analysis cost for lab testing are at expense of the seller.

In case the ICRC decides to hold the penalties during the improvement plan, if the faced nonconformity(ies) persist ; penalty for each non-conformity faced during the improvement plan will be applied.



Process:
Category:
Document type:
Language:
IHT:

Quality Control
Global
Instruction
English
Internal

Title: AQL- Shelter Tool Kit

Document ID: TSLOG-16-86352
Document Status: Approved
Effective date: 12/28/2022
GDP related: No
Version: 2.0

Nonconformities classification: Critical: **C**; Major: **M**; Minor: **m**

Items	Characteristics	Nonconformities classification	QC type	AQL	QC Inspection at ICRC warehouses and lab testing
Parcel	Dimensions	m	Measurement	6.5	1 Carton box Length in mm : Maximum 1190 mm Width in mm : Maximum 290 mm Height in mm : Maximum 140 mm
	General Aspect	m	Ok/Nok	6.5	The bag should be of good quality with no holes or tears. Withstands 6m-high stacking for more than 48h (carton not smashed), and 10 handlings
	Bag Closing	m	Ok/Nok	6.5	The bag is securely sealed with a plastic strap with manual opening. The bag can be detached from the bottom of the bag and packed inside the mouth of the bag.
	Carton box material	m	Ok/Nok	6.5	Standard ICRC/IFRC tarpaulin, white, without the bands
	Marking on the parcel	m	Ok/Nok	6.5	Marking expected: On one side: Shelter tool Kit"+ list of content on the outside of the box + PO number. On the opposite side: ICRC logo in 2 colours.No logo of the supplier allowed. Country of origin upon request.
	Bags design	m	Ok/Nok	6.5	Square rectangular base duffle bag with 6 aluminium or galvanised steel eyelets and a 10mm PP rope for closing that can also act as a shoulder handle.
	Cardboard	m	Ok/Nok	6.5	One or several pieces of cardboard (Double-walled corrugated cardboard) in which the complete kit is securely packed before being placed in the bag. The cardboard folds on the 2 long sides and one short side (To fit in the outer bag). Strapped with 2 heat-sealed 10mm minimum plastic straps.
	Packaging	m	Ok/Nok	6.5	The primary and secondary packages must be sized in order to protect the goods, avoiding empty space inside the packages, and avoiding empty spaces between boxes on pallets, allowing palletization on pallets of 0.8m x 1.2m without exceeding the size of the pallet.Items will not be wrapped in single use plastics.
NAILS, ROOFING	Nails roofing Shank length in mm	M	Measurement	4.0	Minimum : 71,25 mm Maximum: 78,75 mm
	Nails roofing Shank diameter in mm	M	Measurement	4.0	Minimum : 3,42 mm Maximum : 3,78 mm
	Head diameter in mm	M	Measurement	4.0	Minimum diameter : 20mm
	Nails roofing Rubber washer diameter in mm	M	Measurement	4.0	Minimum diameter : 26mm
	Nails roofing Rubber washer thickness in mm	M	Measurement	4.0	Minimum thickness : 2.0mm
	Nails roofing Quantity in kg	M	Ok/Nok	4.0	Net weight (without the bag): Minimum 0.5kg
	Nails roofing Type	M	Ok/Nok	4.0	Iron nails, made of polished steel



Process:
Category:
Document type:
Language:
IHT:

Quality Control
Global
Instruction
English
Internal

Title: AQL- Shelter Tool Kit

Document ID: TSLOG-16-86352
Document Status: Approved
Effective date: 12/28/2022
GDP related: No
Version: 2.0

Nonconformities classification: Critical: **C**; Major: **M**; Minor: **m**

NAILS, ROOFING	Nails roofing Shape	M	Ok/Nok	4.0	Spiral rolled or twisted shank, sealed umbrella-type spring-head.
	Nails roofing Corrosion treatment	M	Ok/Nok	4.0	Galvanized
	Nails roofing Accessories	M	Ok/Nok	4.0	Rubber washer with each nail
	Nails roofing Packing	m	Ok/Nok	6.5	Packed in a strong plastic bag, which can be zipped or locked
NAILS, for wood, Large	Nails wood Large Shank length in mm	M	Measurement	4.0	Minimum : 71,3 mm Maximum : 78,8 mm
	Nails wood Large Shank diameter in mm	M	Measurement	4.0	Minimum : 3,4 mm Maximum : 3,8 mm
	Nails wood Large Head diameter in mm	M	Measurement	4.0	Minimum : 7,3 mm Maximum : 8,1 mm
	Nails wood Large Quantity in kg	M	Measurement	4.0	Net weight (without the bag): Minimum 0.5kg
	Nails wood Large Type	M	Ok/Nok	4.0	Iron nails, made of polished steel
	Nails wood Large Shape	M	Ok/Nok	4.0	Flat, smooth, circular head; plain, round shank and diamond point
	Nails wood Large Corrosion treatment	M	Ok/Nok	4.0	Galvanized
	Nails wood Large Packing	m	Ok/Nok	6.5	Packed in a strong plastic bag, which can be zipped or locked
NAILS, for wood, Small	Nails wood Small Shank length in mm	M	Measurement	4.0	Minimum : 38 mm Maximum : 42 mm
	Nails wood Small Shank diameter in mm	M	Measurement	4.0	Minimum : 2,1 mm Maximum : 2,3 mm
	Nails wood Small Head diameter in mm	M	Measurement	4.0	Minimum : 5,0 mm Maximum : 5,5 mm
	Nails wood Small Quantity in kg	M	Measurement	4.0	Net weight (without the bag): Minimum 0.5kg
	Nails wood Small Type	M	Ok/Nok	4.0	Iron nails, made of polished steel
	Nails wood Small Shape	M	Ok/Nok	4.0	Flat, smooth, circular head; plain, round shank and diamond point
	Nails wood Small Corrosion treatment	M	Ok/Nok	4.0	Galvanized
	Nails wood Small Packing	m	Ok/Nok	6.5	Packed in a strong plastic bag, which can be zipped or locked



Process:
Category:
Document type:
Language:
IHT:

Quality Control
Global
Instruction
English
Internal

Title: AQL- Shelter Tool Kit

Document ID: TSLOG-16-86352
Document Status: Approved
Effective date: 12/28/2022
GDP related: No
Version: 2.0

Nonconformities classification: Critical: C; Major: M; Minor: m

TIE WIRE, roll	Tie wire Length in m	M	Measurement	4.0	Wire length in mm : Minimum 25mm
	Tie wire Diameter in mm	M	Measurement	4.0	Minimum : 1,4 mm Maximum : 1,8 mm
	Tie wire Type	M	Ok/Nok	4.0	Wire, made of steel
	Tie wire Shape	M	Ok/Nok	4.0	Provided in a roll
	Tie wire Corrosion treatment	M	Ok/Nok	4.0	Galvanized roll
	Tie wire Packing	m	Ok/Nok	6.5	Binding /tie wire.
MEASURING TAPE	Measuring tape Length in m	M	Measurement	4.0	Tape length in mm : Minimum 3,0 mm
	Measuring tape Width in mm	M	Measurement	4.0	Tape width in mm : Minimum 20;0 mm
	Measuring tape Type	M	Ok/Nok	4.0	Flexible measuring tape
	Measuring tape Material	M	Ok/Nok	4.0	PVC coated polyester
SHEARS, for metal sheet	Shears Length in mm	M	Measurement	4.0	Minimum : 250 mm Maximum : 260 mm
	Shears Material	M	Ok/Nok	4.0	Steel, special treatment applied to the blade edge
	Shears Shape	M	Ok/Nok	4.0	Each blade and handle forged as one piece, symmetrical blades. Dismountable in 2 parts only, with bolt and self locking nut.
	Shears Corrosion treatment	M	Ok/Nok	4.0	Protected against corrosion with special paint
	Shears Capacity	M	Ok/Nok	4.0	Up to 0.8mm semi-hard iron sheet
CLAW HAMMER	Claw hammer Weight in g	M	Measurement	4.0	Minimum claw hammer weight (with handle) : 700 mm Maximum claw hammer weight (with handle) : 800 mm
	Claw hammer Type	M	Ok/Nok	4.0	Carpenter hammer, head and handle, hammer head with flat and claw side.
	Claw hammer Material	M	Ok/Nok	4.0	Steel head, smooth surface and edges with no dents or cracks; no excess metal in the eye.
	Claw hammer Handle	M	Ok/Nok	4.0	No chips, rough surfaces, cracks, holes or knots. Smooth, polished varnish surface. Dry and strong wood. Handle adapted to head so that it protrudes and can be blocked on other side with a metal wedge on the other side of the head.
	Claw hammer Pull-apart test	M	Ok/Nok	4.0	After two series of 25 vigorous blows with varying delivery angle, secure head in a clamp, apply a minimum traction of 50kg trying to pull the handle out. This should not damage the hammer head or the handle, and the handle should remain firmly attached to the head.
	Claw hammer Bending test	M	Ok/Nok	4.0	When the hammer is clamped horizontally at its head it must resist to a weight of 40kg applied at the extremity of its handle



Process:
Category:
Document type:
Language:
IHT:

Quality Control
Global
Instruction
English
Internal

Title: AQL- Shelter Tool Kit

Document ID: TSLOG-16-86352
Document Status: Approved
Effective date: 12/28/2022
GDP related: No
Version: 2.0

Nonconformities classification: Critical: **C**; Major: **M**; Minor: **m**

NEEDLE, curved	Needle Length in mm	M	Measurement	4.0	Minimum length : 120,6 mm Maximum length : 133,5 mm
	Needle Diameter in mm	M	Measurement	4.0	Minimum diameter : 1,71 mm Maximum diameter : 1,89 mm
	Needle Hole length in mm	M	Measurement	4.0	Minimum hole length : 6,65 mm Maximum hole length : 7,35 mm
	Needle Hole width in mm	M	Measurement	4.0	Minimum hole width : 0,95 mm Maximum hole width : 1,05 mm
	Needle Material	M	Ok/Nok	4.0	Stainless steel
	Needle Shape	M	Ok/Nok	4.0	Curved needle, for hand stitching
HANDSAW	Handsaw blade length in mm	M	Measurement	4.0	Minimum blade length : 400 mm Maximum blade length : 450 mm
	Handsaw overall length in mm	M	Measurement	4.0	Minimum overall length : 500 mm Maximum overall length : 600 mm
	Handsaw blade thickness in mm	M	Measurement	4.0	Minimum blade thickness : 0,95 mm Maximum blade thickness : 1,05 mm
	Handsaw number of teeth per inch	M	Ok/Nok	4.0	Minimum teeth per Inch : 6 Maximum teeth per inch : 8
	Handsaw Blade protection	M	Ok/Nok	4.0	Protective cardboard, teeth protection with hard, plastic cover
	Handsaw quality of made	M	Ok/Nok	4.0	Soft edges but no dents, cracks or broken teeth
	Handsaw handle	M	Ok/Nok	4.0	Wooden dismountable handle, minimum 3 fixations, polished varnish hardwood, large 85x35mm opening for hand comfort when wearing gloves.
	Handsaw Strength testing	M	Ok/Nok	4.0	With the blade inserted into a 10mm-wide slot to a depth equal to 1/3 the blade's length, but not exceeding 150 mm, a deflection of 90° is applied 25 times in each direction without breakage or permanent set to the blade.
ROPE, POLYPROPYLENE, diam. 3mm	Rope diam 3mm diameter in mm	M	Measurement	4.0	Minimum rope diameter : 2,8 mm Maximum rope diameter : 3,2mm
	Rope diam 3mm length in m	M	Measurement	4.0	Rope length : Minimum 30m
	Rope diam 3mm weight in g	M	Measurement	4.0	Rope weight : Maximum 100 g
	Rope diam 3mm strand	M	Ok/Nok	4.0	Number of strand: 3 minimum
	Rope diam 3mm type	M	Ok/Nok	4.0	Twisted
	Rope diam 3mm material	M	Ok/Nok	4.0	Polypropylene, no recycled fibres
	Rope diam 3mm colour	m	Ok/Nok	6.5	Black



Process:
Category:
Document type:
Language:
IHT:

Quality Control
Global
Instruction
English
Internal

Title: AQL- Shelter Tool Kit

Document ID: TSLOG-16-86352
Document Status: Approved
Effective date: 12/28/2022
GDP related: No
Version: 2.0

Nonconformities classification: Critical: **C**; Major: **M**; Minor: **m**

ROPE, POLYPROPYLENE, diam. 12mm	Rope diam 12mm diameter in mm	M	Measurement	4.0	Minimum rope diameter : 11,5 mm Maximum rope diameter : 12,5 mm
	Rope diam 12mm length in m	M	Measurement	4.0	Rope length : Minimum 30m
	Rope diam 12mm weight in g	M	Measurement	4.0	Rope weight : Minimum 1900 g
	Rope diam 12mm strand	M	Ok/Nok	4.0	Number of strand: 3 minimum
	Rope diam 12mm type	M	Ok/Nok	4.0	Twisted
	Rope diam 12mm material	M	Ok/Nok	4.0	Polypropylene, no recycled fibres
	Rope diam 12mm colour	m	Ok/Nok	6.5	Black
HOE(3lb), with long handle	HOE Length in mm	M	Measurement	4.0	Minimum hoe length : 300 mm Maximum hoe length : 320 mm
	HOE, Width in mm	M	Measurement	4.0	Minimum hoe width : 170 mm Maximum hoe width : 190 mm
	HOE, hole diameter front in mm	M	Measurement	4.0	Minimum front diameter : 40 mm Maximum front diameter : 44 mm
	HOE, hole diameter back in mm	M	Measurement	4.0	Minimum hoe back diameter : 44 mm Maximum hoe back diameter : 48 mm
	HOE weight in g(Without handle)	M	Measurement	4.0	Minimum hoe weight : 1100 g Maximum hoe weight : 1400 g
	HOE handle length in mm	M	Ok/Nok	4.0	Minimum handle length : 1100 mm Maximum handle length : 1150 mm
	HOE material	M	Ok/Nok	4.0	Forged steel, at a maximum the hardened zone should reach halfway up the back of the blade
	HOE corrosion protection	M	Ok/Nok	4.0	black paint (except for hardened zone)
	HOE general quality	M	Ok/Nok	4.0	No excess metal in the eye, no dent on the cutting edge, reinforced head with a rib from the eye to the middle of the blade length.



Process: Quality Control
Category: Global
Document type: Instruction
Language: English
IHT: Internal

Title: AQL- Shelter Tool Kit

Document ID: TSLOG-16-86352
Document Status: Approved
Effective date: 12/28/2022
GDP related: No
Version: 2.0

Nonconformities classification: Critical: **C**; Major: **M**; Minor: **m**

HOE(3lb), with long handle	HOE handle general quality	M	Ok/Nok	4.0	No chips, rough surfaces, cracks, holes or knots. Smooth, polished varnish surface. Handle adapted to head so that it protrudes from and blocks on the other side of the head. → Then OK(1) or NOK(0)
	HOE, with long handle, Stre	M	Ok/Nok	4.0	Using a fitted, standard hardwood handle, clamp the blade of the hoe near the handle in a horizontal position. Gradually apply a load of 45kg and maintain it for 2 minutes. This should not result in any damage to the blade or a loosening of the handle, and no permanent set in excess of 25mm.
	Chemical composition	M	Measurement	4.0	Carbon content : 0.4% to 0.5%
		M	Measurement	4.0	Manganese content : 0.5% to 0.6%
		M	Measurement	4.0	Silicone content : 0.25% Maximum
		M	Measurement	4.0	Phosphorous and sulphur : 0.06% Maximum
		M	Measurement	4.0	Rockwell hardness C(HRC) : 35 minimum to 48 maximum in hardened zone of the blade
HOE, MUTT HOE(head only)	Mutt Hoe, Length in mm	M	Measurement	4.0	Minimum hoe length : 240 mm Maximum hoe length : 260 mm
	Mutt Hoe, Width in mm	M	Measurement	4.0	Minimum hoe width : 60 mm Maximum hoe width : 80 mm
	Mutt Hoe, hole diam low in	M	Measurement	4.0	Minimum hole diameter-Low : 41 mm Maximum hole diameter-Low : 45 mm
	Mutt Hoe, hole diam top in	M	Measurement	4.0	Minimum hole diameter-Top : 46 mm Maximum hole diameter-Top : 50 mm
	Mutt Hoe, weight in g	M	Measurement	4.0	Minimum hoe diameter-Back : 650 mm Maximum hoe diameter-Back : 750 mm
	Mutt Hoe, material	M	Ok/Nok	4.0	Forged steel, at a maximum the hardened zone should reach halfway up the back of the blade
	Mutt Hoe, corrosion protec	M	Ok/Nok	4.0	black paint (except for hardened zone)
	Mutt Hoe, quality of made	M	Ok/Nok	4.0	No excess metal in the eye, no dent on the cutting edge, reinforced head with a rib from the eye to the middle of the blade length.



Process:
Category:
Document type:
Language:
IHT:

Quality Control
Global
Instruction
English
Internal

Title: AQL- Shelter Tool Kit

Document ID: TSLOG-16-86352
Document Status: Approved
Effective date: 12/28/2022
GDP related: No
Version: 2.0

Nonconformities classification: Critical: **C**; Major: **M**; Minor: **m**

HOE, MUTT HOE(head only)	Mutt Hoe, Strength testing	M	Ok/Nok	4.0	Using a fitted, standard hardwood handle, clamp the blade of the hoe near the handle in a horizontal position. Gradually apply a load of 45kg (on the handle near the blade) and maintain it for 2 minutes. This should not result in any damage to the blade or a loosening of the handle, and no permanent set in excess of 25mm.
	Chemical composition	M	Measurement	4.0	Carbon content : 0.5% to 0.8%
		M	Measurement	4.0	Manganese content : 0.6% to 1.2%
		M	Measurement	4.0	Silicone content : 0.37% Maximum
		M	Measurement	4.0	Phosphorous and sulphur : 0.06% Maximum
		M	Measurement	4.0	Rockwell hardness C(HRC) : 35 minimum to 48 maximum in hardened zone of the blade
MACHETTE, wooden handle	Machete, overall length in mm	M	Measurement	4.0	Overall length in mm : Minimum 550mm
	Machete, Handle length in mm	M	Measurement	4.0	Minimum handle length in mm : 160mm
	Machete, Straight blade length in mm	M	Measurement	4.0	Minimum straight blade length : 405 mm
	Machete, Blade thickness in mm	M	Measurement	4.0	Blade thickness in mm : Minimum 2,5mm
	Machete, Type	M	Ok/Nok	4.0	Curved blade, lacquered against oxidation, 3 grooves that runs the full length of the blade to key in the handle
	Machete, Material	M	Ok/Nok	4.0	Forged steel, hardened throughout the entire blade
	Machete, Quality of make	M	Ok/Nok	4.0	No dent on the cutting edge
	Machete, protection	M	Ok/Nok	4.0	Blade packed in carton pocket for protection
	Machete, Handle	M	Ok/Nok	4.0	Wooden handle with 3 aluminium rivets plus washers
	Machete, Quality of handle	M	Ok/Nok	4.0	No chips, rough surfaces, cracks, holes or knots. Smooth, polished varnish surface.



Process:
Category:
Document type:
Language:
IHT:


Quality Control
Global
Instruction
English
Internal

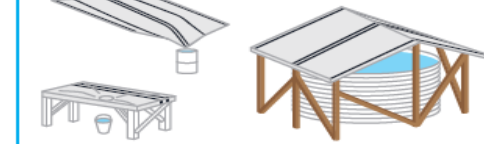
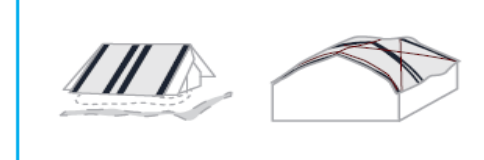
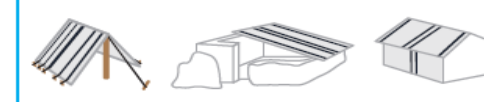
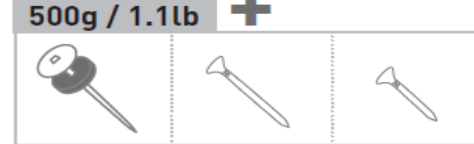
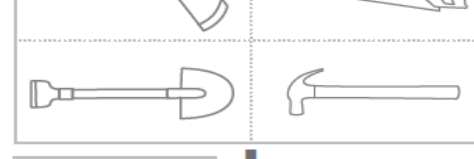
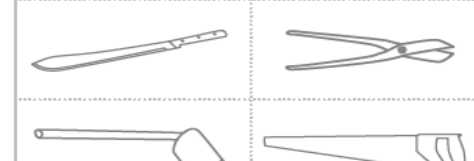
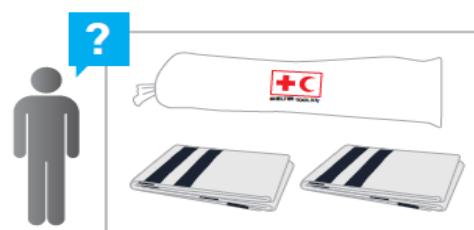
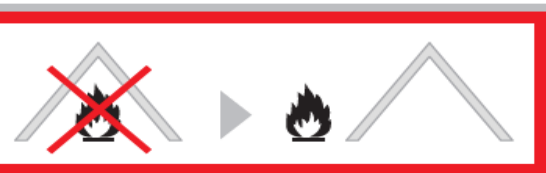
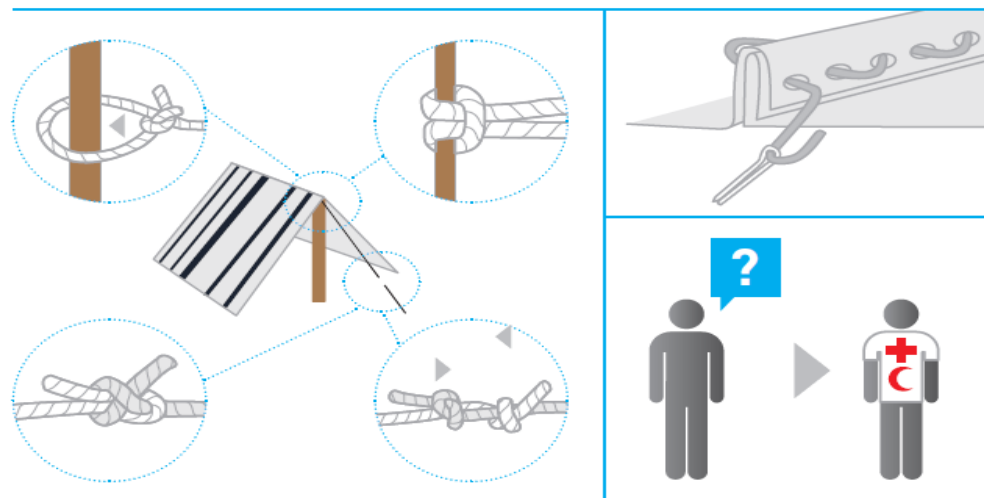
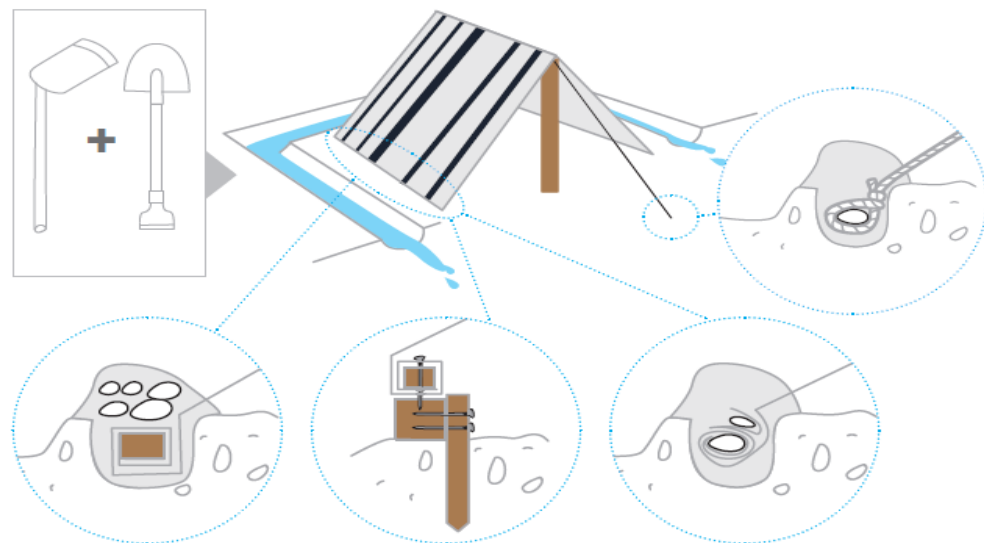
Title: AQL- Shelter Tool Kit

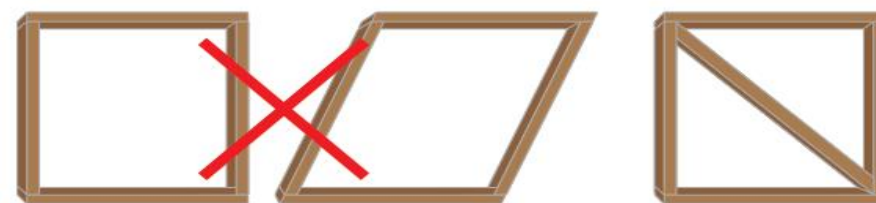
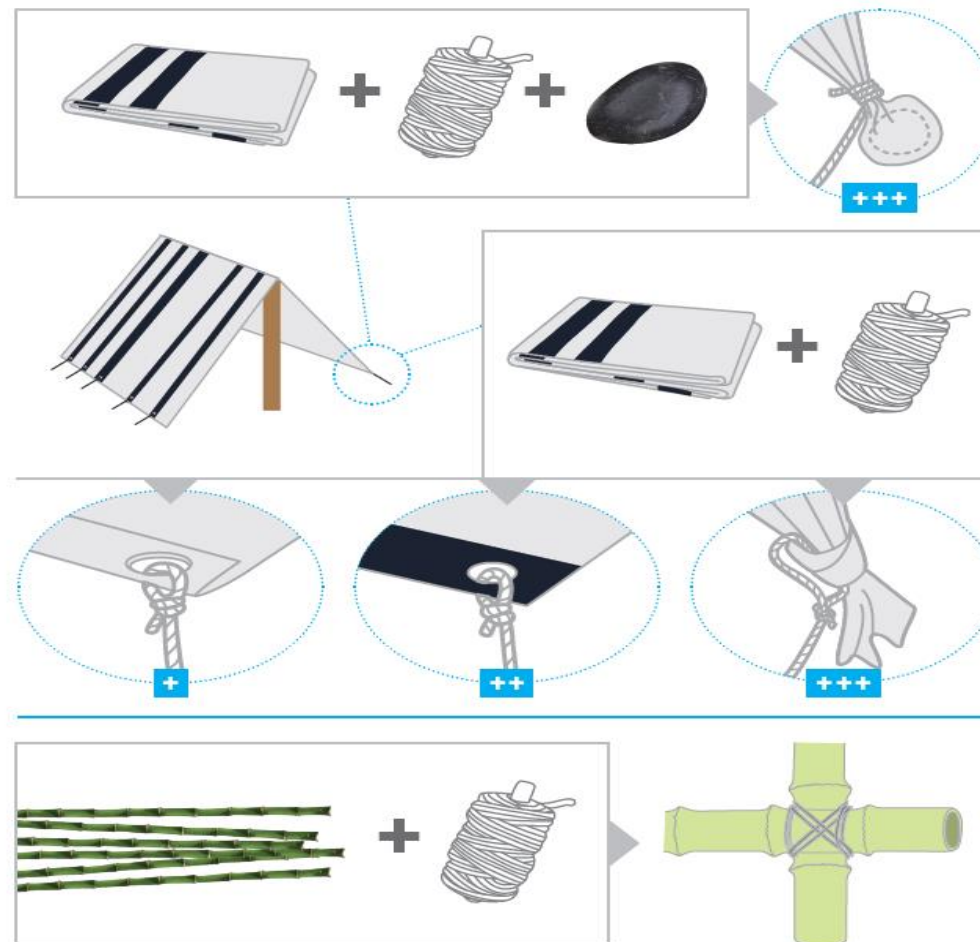
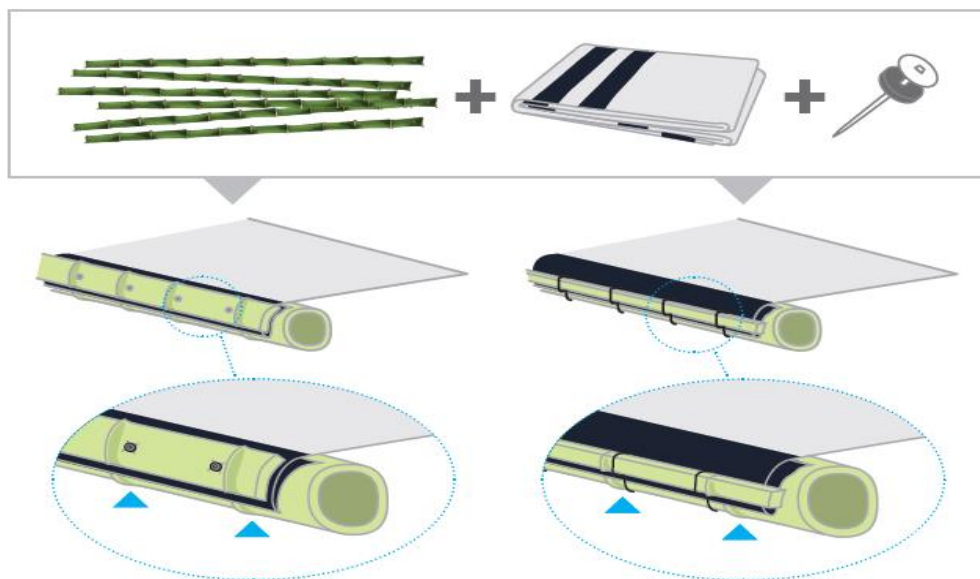
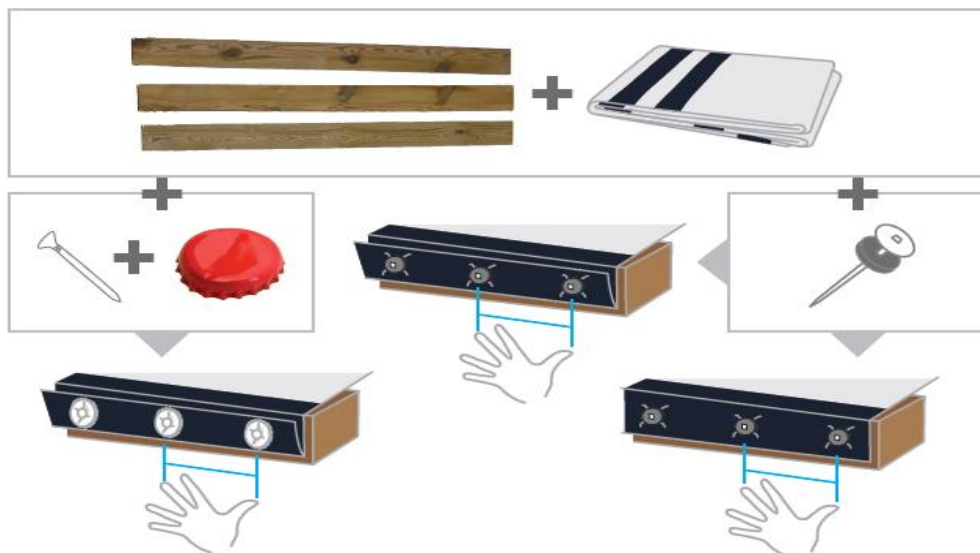
Document ID: TSLOG-16-86352
Document Status: Approved
Effective date: 12/28/2022
GDP related: No
Version: 2.0

Nonconformities classification: Critical: **C**; Major: **M**; Minor: **m**

MACHETTE, wooden handle	Machete, Strength testing	M	Ok/Nok	4.0	Insert the blade in a 10mm-wide slot up to a depth equal to 1/3 its blade length, but not exceeding 150mm; apply a deflection of 45° in each direction without breakage or permanent set to the blade.
	Chemical composition	M	Measurement	4.0	Carbon content : 0.6% TO 0.65%
		M	Measurement	4.0	Manganese content : 0.6% to 0.8%
		M	Measurement	4.0	Silicone content : 0.3% Maximum
		M	Measurement	4.0	Phosphorous and Sulphur : 0.03% Maximum
		M	Measurement	4.0	Rockwell hardness C(HRC) : 45 Min to 50 Max near cutting edge
SHOVEL, Y handle	Shovel, overall length in mm	M	Measurement	4.0	Minimum Overall Length : 1020 mm Maximum Overall length : 1120 mm
	Shovel, blade length in mm	M	Measurement	4.0	Minimum Blade Length : 280 mm Maximum Blade length : 310 mm
	Shovel, blade width in mm	M	Measurement	4.0	Minimum Blade Length : 210 mm Maximum Blade length : 240 mm
	Shovel, hole front diam in mm	M	Measurement	4.0	Minimum Hole diameter-Front : 34 mm Maximum Hole diameter-Front : 38 mm
	Shovel, hole back diam in mm	M	Measurement	4.0	Minimum Hole diameter-Back : 38 mm Maximum Hole diameter-Back : 42 mm
	Shovel, weight in g	M	Measurement	4.0	Minimum Shovel weight(Without handle) : 950 g Maximum Shovel weight(Without handle) : 1050 g
	Shovel, Type ok/nok	M	Ok/Nok	4.0	SHOVEL, round point with Y handle
	Shovel, corrosion protection	M	Ok/Nok	4.0	Black paint
	Shovel, Quality of make	M	Ok/Nok	4.0	No excess metal in the eye, no dents, no cracks, soft edges
	Shovel, Quality of handle	M	Ok/Nok	4.0	No chips, rough surfaces, cracks, holes or knots. Smooth, polished varnish surface. Handle adapted to head so that it can be blocked and secured with a nail.
	Shovel, Strength testing	M	Ok/Nok	4.0	Using a fitted, standard hardwood handle, clamp the blade of the hoe near the handle in a horizontal position. Gradually apply a load of 45kg (on the handle near the blade) and maintain it for 2 minutes. This should not result in any damage to the blade or a loosening of the handle, and no permanent set in excess of 25mm.

 ICRC	Process: Category: Document type: Language: IHT:	Quality Control Global Instruction English Internal	Title: AQL- Shelter Tool Kit			Document ID: Document Status: Effective date: GDP related: Version:	TSLOG-16-86352 Approved 12/28/2022 No 2.0
Nonconformities classification: Critical: C ; Major: M ; Minor: m							
SHOVEL, Y handle	Chemical composition	M	Measurement	4.0	Carbon content : 0.4% to 0.5%		
		M	Measurement	4.0	Manganese content : 0.5% to 0.8%		
		M	Measurement	4.0	Silicone content : 0.25% Maximum		
		M	Measurement	4.0	Phosphorous and Sulphur : 0.06% Maximum		
		M	Measurement	4.0	Rockwell hardness C(HRC) : 35 Min to 48 Max near cutting edge		
TROWEL, round point brick trowel, with wood handle	Blade length in mm	M	Measurement	4.0	Minimum blade length: 202 mm Maximum blade length : 198 mm		
	Blade width in mm	M	Measurement	4.0	Minimum blade width: 118 mm Minimum blade width : 122 mm		
	Handle length in mm	M	Measurement	4.0	Minimum Handle length: 130mm Maximum Handle length: 150mm		
	Weight in g	M	Measurement	4.0	Minimum weight : 300 g Maximum weight : 400 g		
	Material	M	Ok/Nok	4.0	High grade steel, Hardened and tempered, ground polished		
	Make	M	Ok/Nok	4.0	Blade and handle spike forged in one piece. Hardwood handle with polished steel ferrule		
	Type	M	Ok/Nok	4.0	Brick laying round point trowel		
Spirit level, aluminium, standard	Length in mm	M	Measurement	4.0	Minimum total length: 590mm Maximum total length: 610mm		
	Material	M	Ok/Nok	4.0	, aluminium, standard Good quality aluminium body, shockproof. Includes 3 vials, horizontal, vertical, and 45° angle.		





IFRC thanks the French Red Cross for its support in producing this brochure.